

Expert in Virtualization



Our Vision

Digitalization will be deeper in every industry and every scenarios

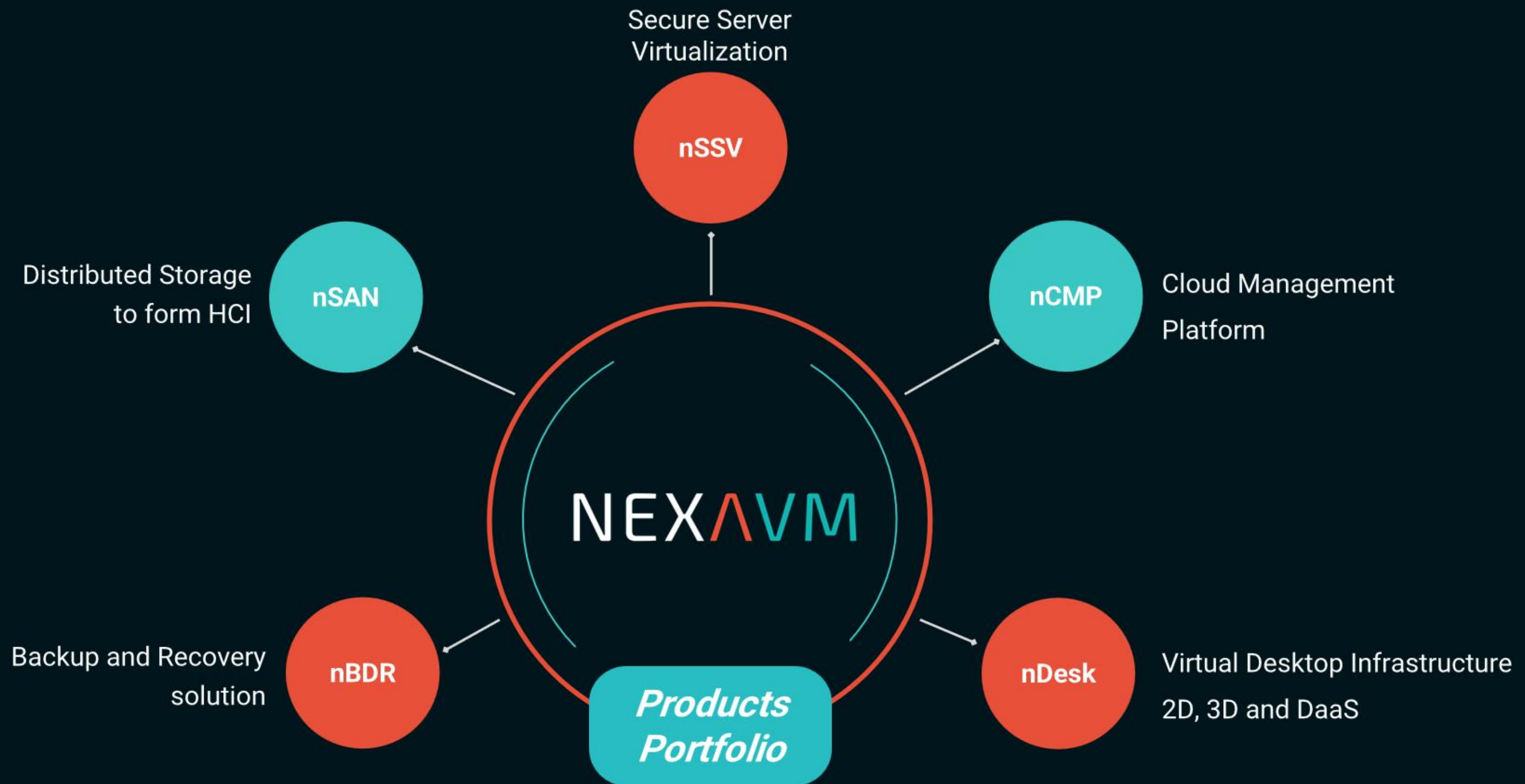
Software will play big role in commercialize AI uses cases



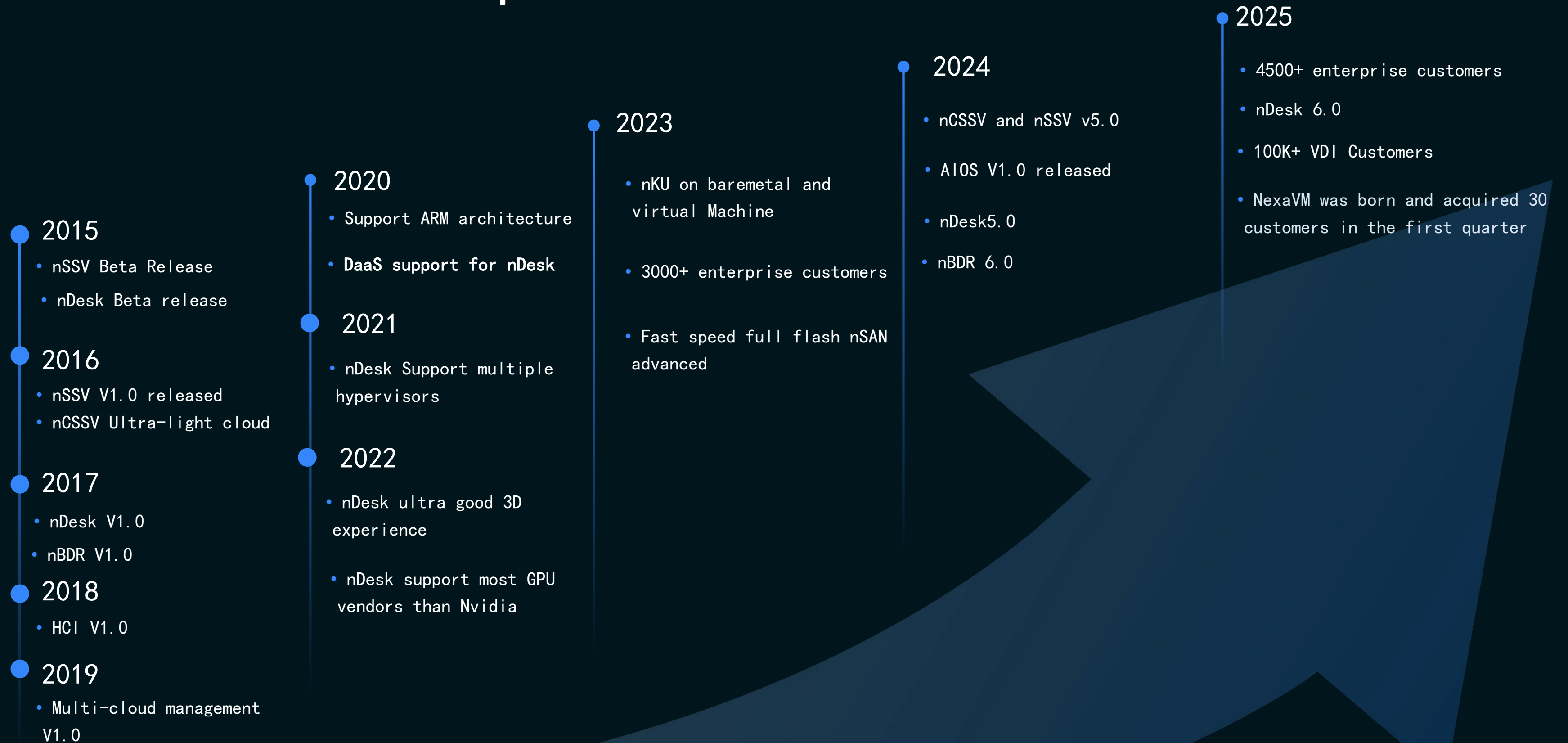
Our Mission

Expert in solving all problems related to virtualization in the digital transformation

Provide sustainable long term benefit to the market



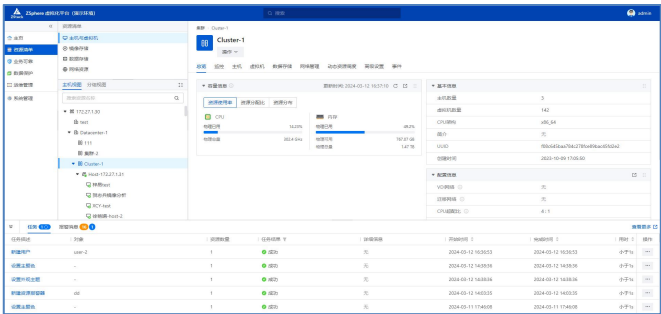
Milestones of the products



vmware replacement Plan

360 degree replacement of Vmware

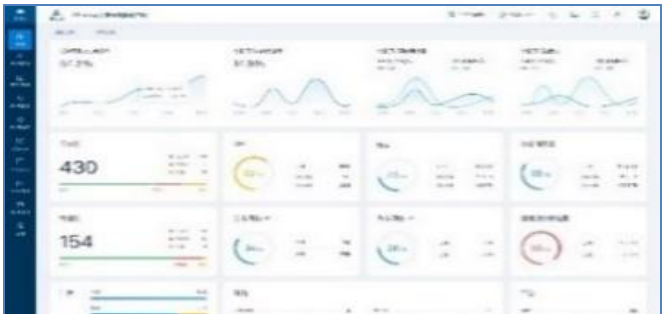
NexaVM nSSV



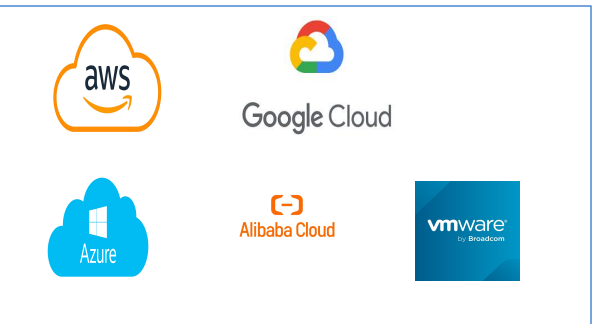
NexaVM HCI
nSSV+nSAN



NexaVM nCMP



NexaVM nMCMP



vSphere

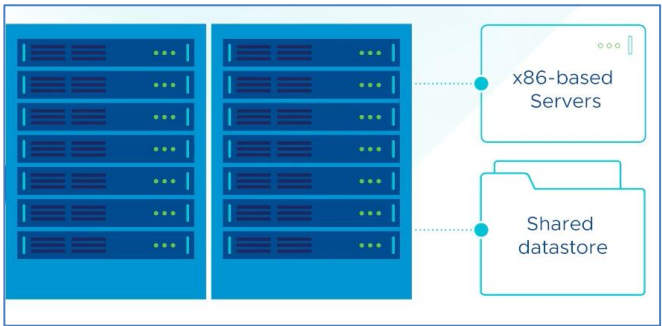
vSphere+vSAN

vSphere+vSAN+NSX+Ar ia+TKG. . .



vCenter Standard/essential+

vSphere Standard/essential+



vSphere enterprise

vSAN Enterprise

vCenter Enterprise



vSphere Enterprise +

SDDC Manager

NSX Enterprise +

AON Enterprise

vSAN Enterprise



vSphere Enterprise +

SDDC Manager

NSX Enterprise +

VMware Aria Cloud Management

vSAN Enterprise

Seamless Migration from Vmware



Cloud

1

Control Center

10.0.676.0

Cloud

Setup Wizard

11/12/2025
08:55:25 AM

Administrator
admin

#	Type	Display Name	User	Username / Access key ID / Tenant ID Time	Details
<input type="radio"/>		NexaVMnSSV#10.10.1.15	admin	10.10.1.15 (AccessKey ID : 6C64PnjWNUVu3bEhbW5D) 2025-11-12 05:56:36	
<input type="radio"/>		GTW	admin	10.10.1.25 (VMware vCenter Server 6.7.0 build-24323669) 2025-11-12 06:13:27	

2

+ Add

Edit

Delete

Search

0 learning curve for vmware certified engineers



NEXAVMnSSV

SearchCtrl+Kadmin

<<

DashboardInventoryStorage ServiceBusiness Reliab...Data ProtectionO&M Managem...System Manage...

VM and HostImage and TemplateData StorageNetwork Resource

Host ViewGroup View

Search by name/IP/MAC/UUID

▼ 192.168.30.216
 ▼ Datacenter-NexaMono
 ▼ Cluster-NexaMono
 ▼ host-1
 new-win10002SG SIEMCWPP_Elkeid ConsoleVDI-3VDI-2VDI-1w10engNexaVM nBDRw10Ita

Host > host-1

Enter Web Terminal

Actions

OverviewMonitoringHardware DeviceKernel AdapterVirtual MachineAlarmEvent

▼ Basic Info

State	Enabled
Status	Connected
Power Status ⓘ	IPMI Unmanaged
VMs	9
Host IP	192.168.30.216
SSH Username	root
SSH Port	22
Operating System	helix Green Obsidian 8.4
Host IQN	iqn.2015-01.io.helix:67da5bf5e72b
Uptime	4 days 23 hours 54 minutes 40 seconds
Description	Empty
UUID	6b30e63041644b1ca36e187ba8acbc01
Addition Time	2025-09-12 15:59:28

▼ Configurations

IPMI Address	192.168.1.53
IPMI Port	623

▼ Capacity Info ⓘUpdated at: 2025-11-12 18:41:30

UtilizationAllocation RatioDistribution

CPUPhysical Used12.53%Physical Available87.47%Physical Total33.6 GHz

MemoryPhysical Used16.01%Physical Available210.95 GBPhysical Total251.15 GB

StoragePhysical Used21.17%Physical Available2.4 TBSafety Threshold Capacity357.52 GBPhysical Total3.49 TB

▼ Hardware Overview

Host Model	INSPUR
Serial Number	819425385
CPU Model	Intel(R) Xeon(R) Silver 4110 CPU @ 2.10GHz
CPU Clock Speed	2.10 GHz
Physical CPU Cores	8 cores
Logical CPU Cores	16 cores
CPU Architecture	x86_64
Physical NIC	UP 1DOWN 7View
NUMA	View pNUMA Topology

Secured Hypervisor nSSV

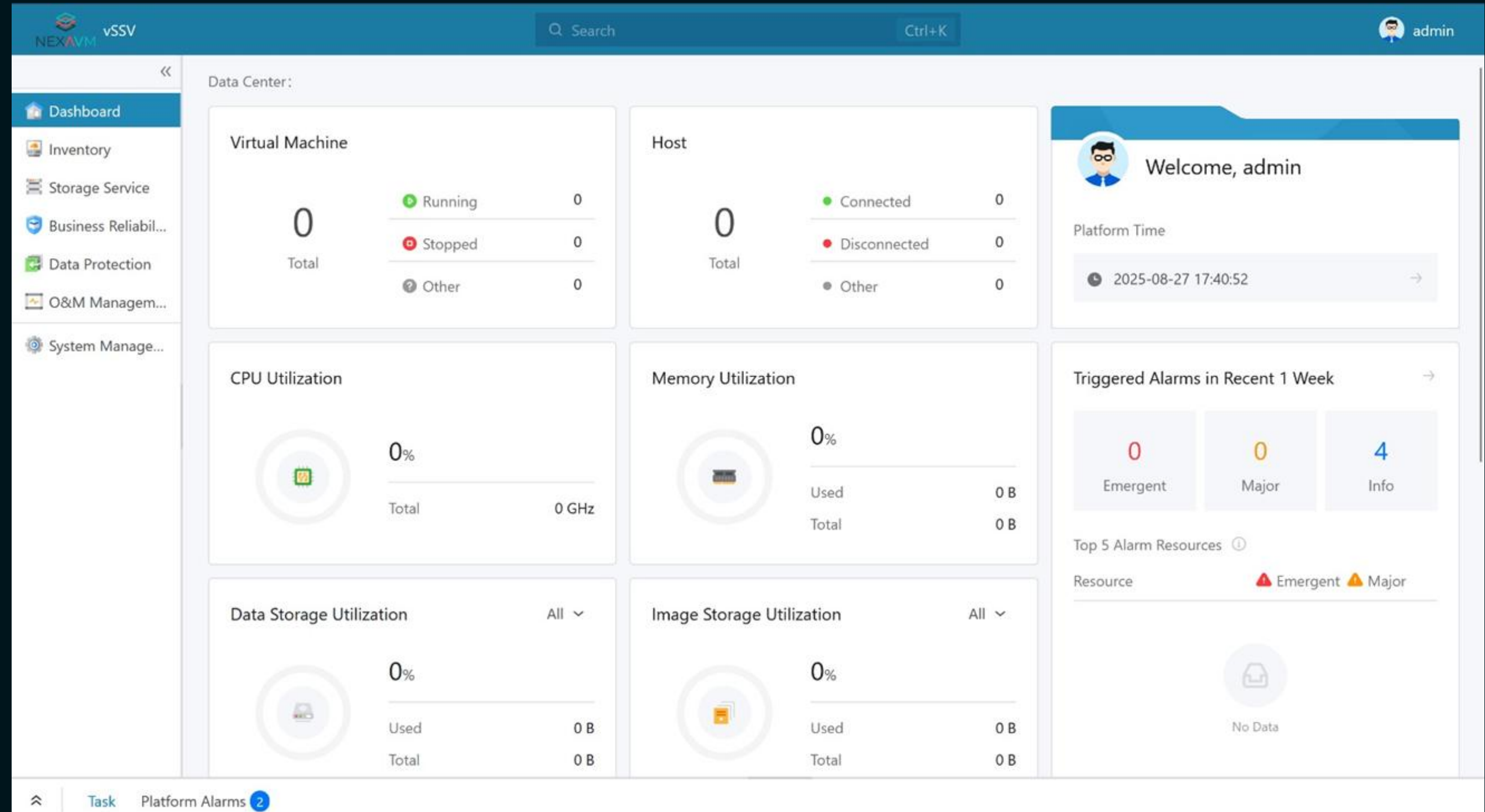
NEXAVM nSSV - secure hypervisor



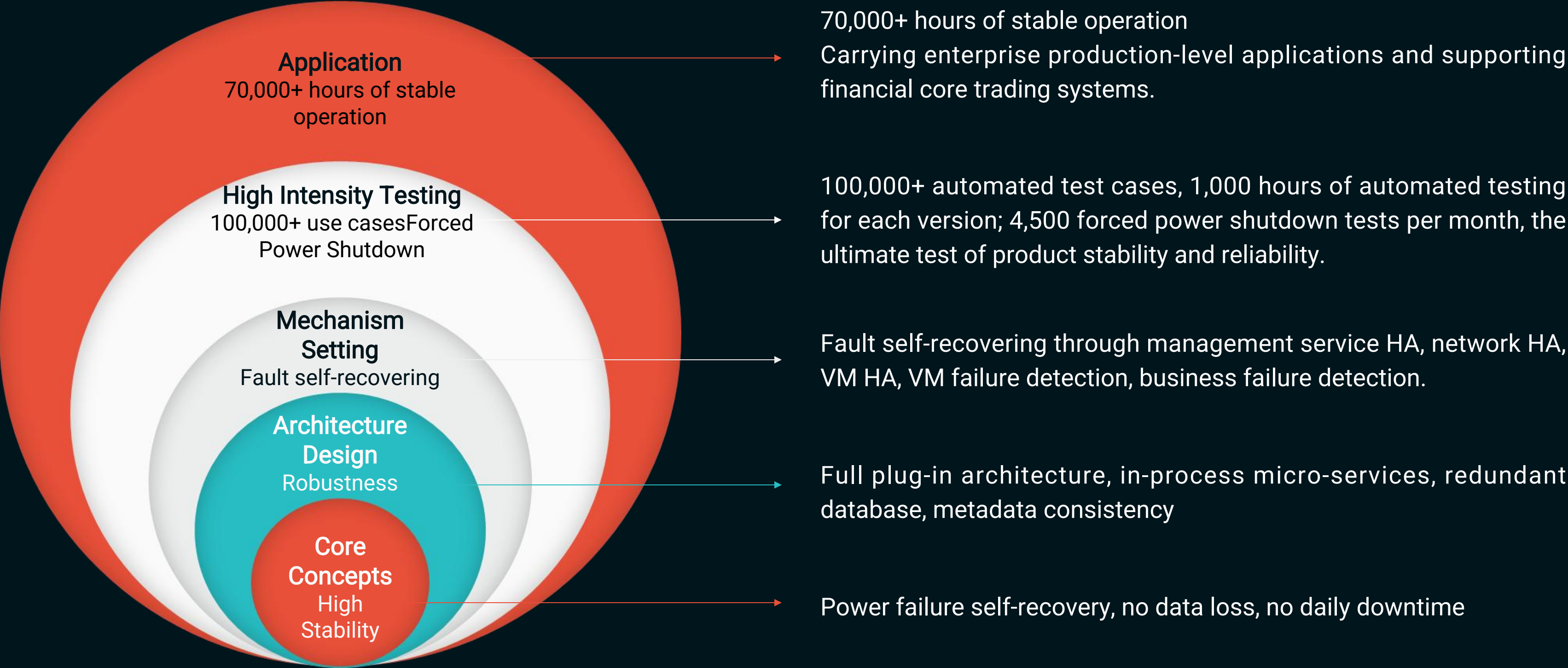
Key highlights:

- Simple to use
- fast responsive GUI operation
- high performance
- great compatibility
- unmatched scalability
- improving eco system

Technically well integrated with multiple backup software



STABLE and RELIABLE Hypervisor



NexaVM HCI

HCI consolidate hardware and remove Silos

Open architecture managing all workloads

Single Cluster
Management

Multi Clusters
Management

Multi-vendor
Management

Multi-Cloud
Management

All infrastructure hardware are virtualized into X86 Servers



Compute



Storage



Network



Security



Innovation

Distributed storage Solutions Options

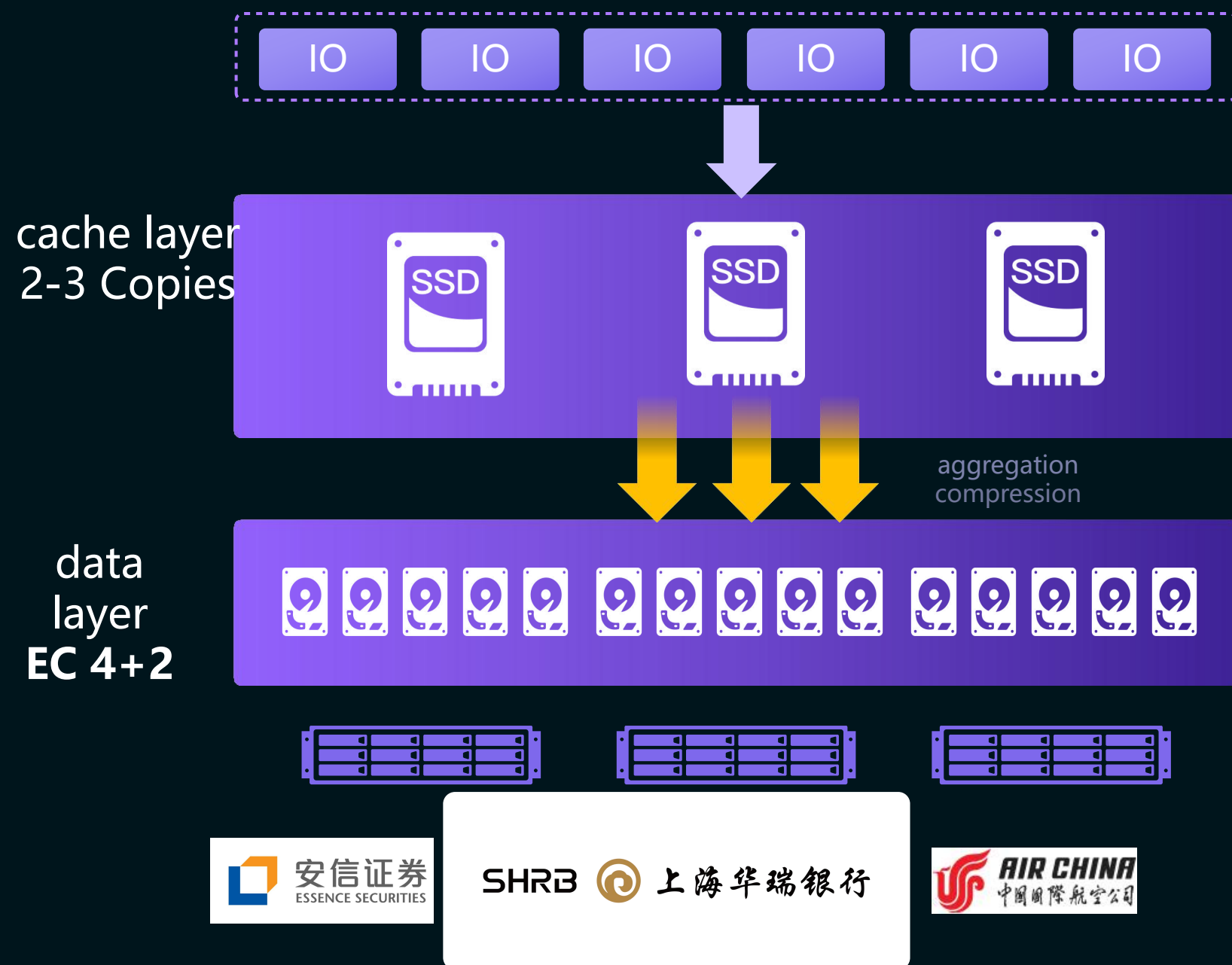
nSAN: Ceph based distributed block storage made for less IOPS intensive use cases. less than 50% of the raw disks are usable.

nSAN-flash: Full flash distributed storage, 100% self-developed software serving high performance block storage. less than 50% of the raw disks are usable.

nSDS: suitable for all use cases especially in need of large deployments with need of block, file and object storage. want to have high ratio of utilization of the hardware disks. more than 65% of the raw disk are usable.



nSDS: Best-in-Class Mixed-Flash Architecture



"Cache that will never be broken."

-Patented data flushing technology

Customer Pain Points

- As the number of business accesses increased, the cache was insufficient and **write performance dropped by 97%**;
- SSD failure or end-of-life, the corresponding HDD data needs to **be reconstructed**;
- Three copies **are costly**.

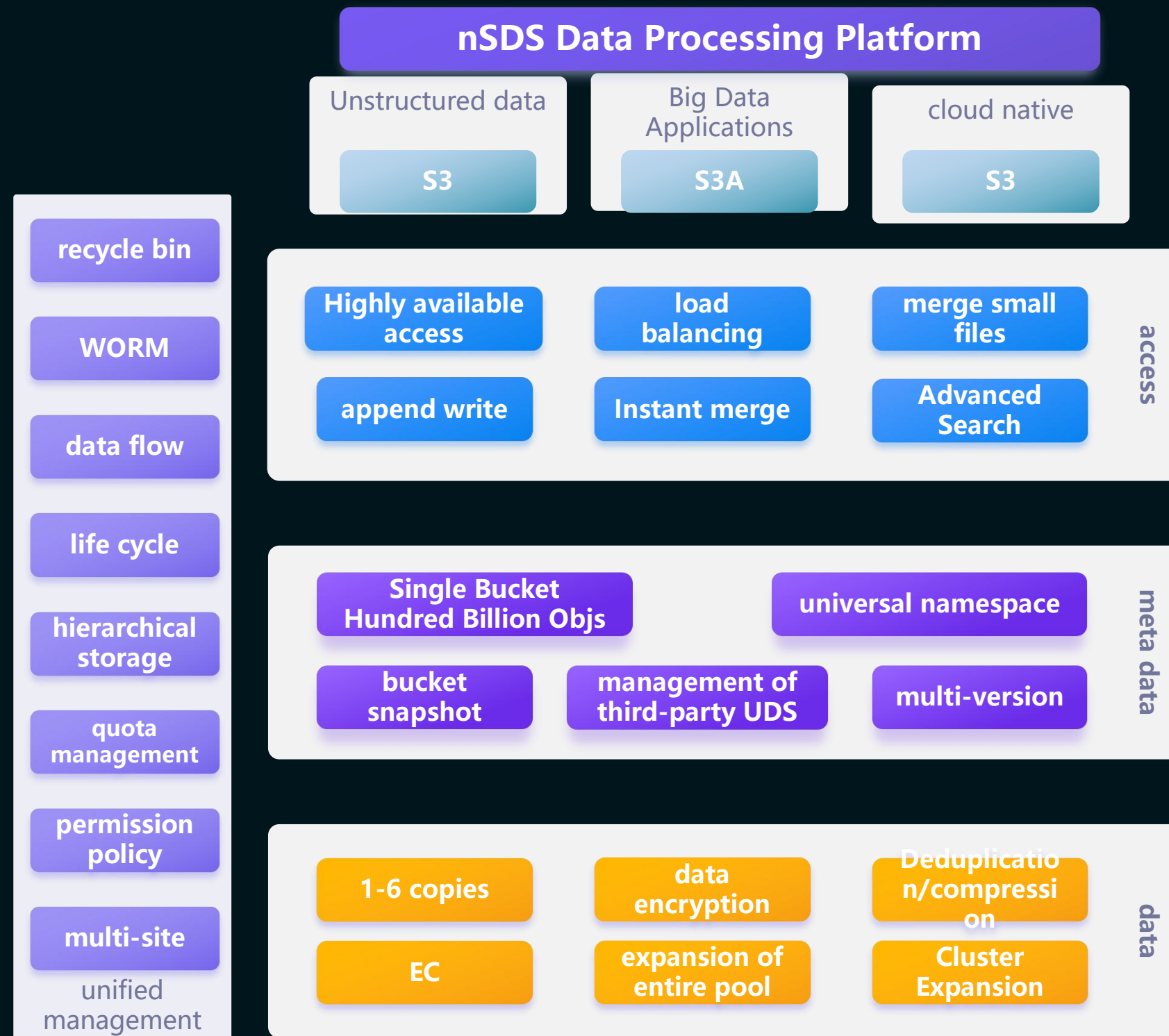
Architecture Features

- Innovative aggregation of small random writes in the SSD Cache layer into large sequential writes to **solve performance problems in data flushing scenarios**;
- Aggregate Appendonly writes for **efficient EC+compression and capacity**;
- Small files merging so that space is not wasted;
- Supports independent expansion of SSD and HDD, **replacing SSD does not affect HDD data**.

customer value

- Guarantee 50%-75% peak performance during sudden business peaks to **ensure business continuity**;
- Up to **300% reduction in** hard disk purchase costs

nSDS: Best Unstructured Data Engine



Customer Pain Points

- Limited file number for bucket specifications and complex management
- Data management cannot be automated
- Lack of QoS mechanisms to ensure business-critical quality of service
- Low level of automation of data flow and single function

Architecture Features

- Independent metadata service supporting hundreds of billions in a single bucket with no performance degradation
- Token ring mechanism to support business and backend load control, user and bucket level control
- Efficient filtering of lifecycle data, rich filtering rules
- Supports multiple data management policies and rich secondary storage types

Value gains

- Massive amount of files, easy to manage, reduce TCO
- Infinitely scalable, bucket performance is independent of file number
- Support for business-critical QoS

nSDS Product Path



Focus on Business Innovation

Focus on Business Continuity






Focus on High Performance

Innovative Business

Production Operations

Core Business







SDS V2

SDS V3

SDS V4

SDS V5

SDS V6

XEBS-XINFINI All-NVMe

SDS XGFS/XEUS-XINFINI

SDS V7

- Released distributed block storage products
- Release of Object Storage

- Released first generation of enterprise-class file storage
- Released a protocol-wide unified storage

- Released nSDS V4, focusing on user scenarios and more optimized for a single scenario
- Release of storage all-in-one to meet the need for harmonization of procurement and services

- Released data operating system to support multiple cores in one pool
- Announcing a new distributed file store
- Released open content platform, business and object storage linkage
- Converged Computing with Separate Deployment

- Released nSDS V6, fully escorting critical business
- Released next-generation object storage to support hyperscale scenarios

- Release All- NVMe Nodes (Blocks) for Extreme Performance
- support for high-performance VMs
- provides intelligent data processing and mobility services

- Release of All NVMe Nodes (File, Unified Storage, across ARM and X86 hardware)

- nSDS V7 released, all-flash and mixed-flash co-clustering, data flow



2016

2018

2019

2021

2022

2024H1

2024H2

2025



NexaVM MCMP

Why NexaVM Multi-Cloud Management Platform



70% OPEX reduction



reduce workload and mistakes

- online automated deployment
- one click deployment of resource and application
- manage workload across clouds
- integrate and manage different Isolated Systems.

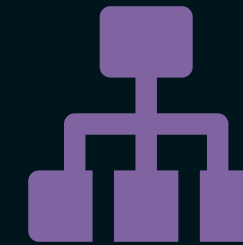
Reduce Waste



identify wasted resources

- life cycle management of resources
- 360 degree of cost control
- comprehensive billing analysis
- regular optimization report

Faster TTM



TTM reduced up to 90%

- customize life cycle management automatically
- predefined policies
- visualize approval process
- follow ISO/IEC 20000

Cloud Service provider or large enterprise



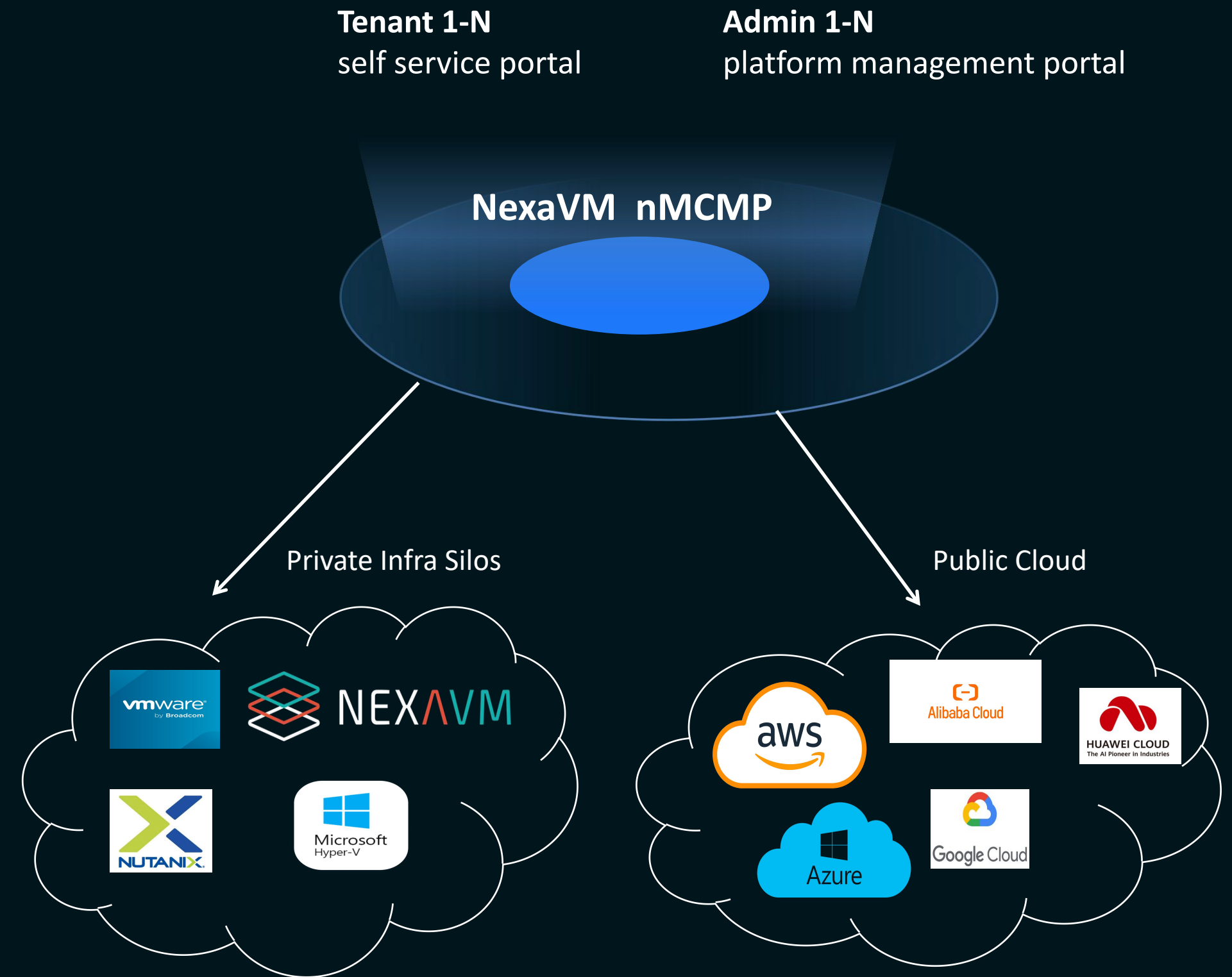
Hybrid cloud construction

One customer has both private infrastructure and public cloud for their business systems



Consolidate Management Infra-Vendors

Multiple clusters of technologies from different vendors i.e NexaVM/Vmware/Nutanix/HyperV..... more integrations could be customized driven by customer need

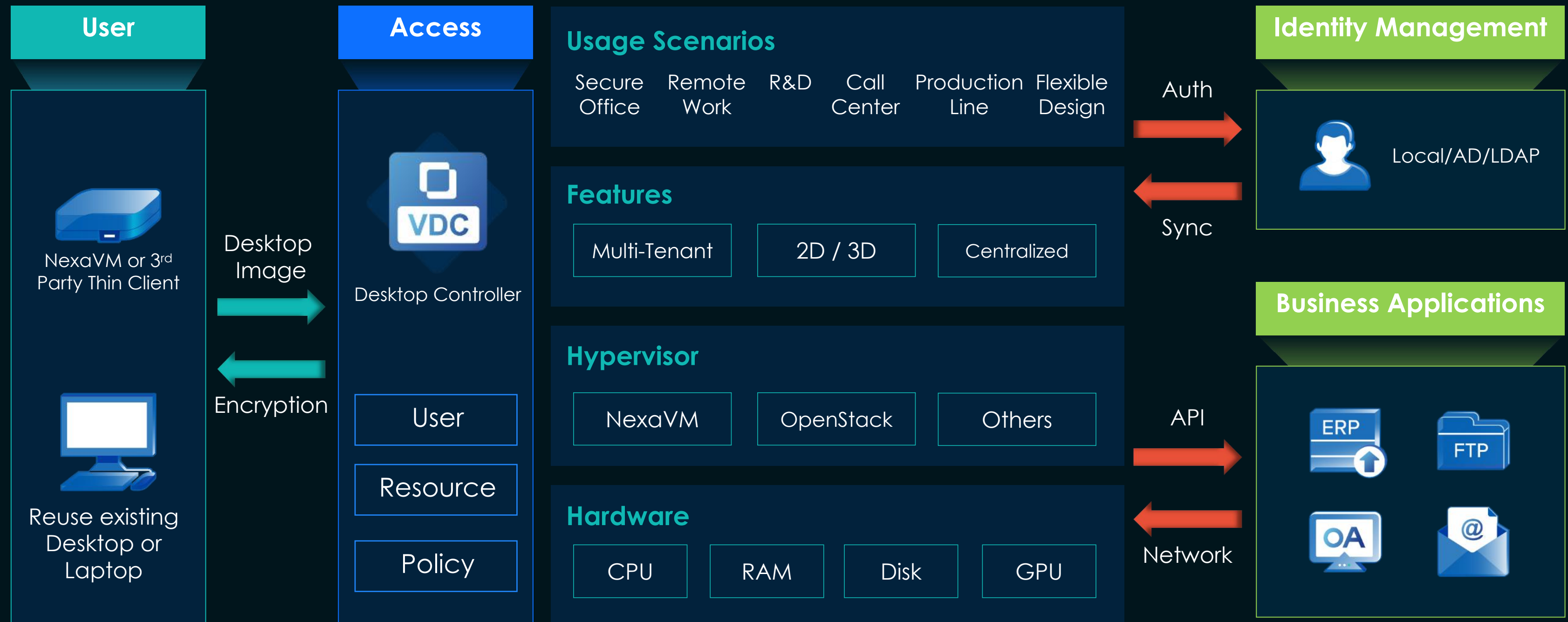


NexaVM VDI

NexaVM nDesk | Architecture



Provides a one-stop secure, efficient, and resilient workspace solution
For business transformation.



VDI is Popular in these Industrial Sectors

General Enterprise



- Secure Office
- Remote Work
- Call Center
- R&D Department

Education



- University Computer Lab
- E-Library

Manufacturing



- Production Line
- Product Design

BFSI



- Secure Office
- R&D Department
- Service Hall

Government



- Secure Office
- Service Hall
- Remote Work

Healthcare



- Doctor's Office
- Nurse Station
- Reception

Feature Offerings of NexaVM nDesk Solution



Data Security

- DLP Solution (Watermark, Peripheral Control)
- Desktop Backup
- Encrypted Transmission
- Disk Error Protection
- Centralized Data in HQ



Efficiency Improvement

- Unified Management Solution for VDI Servers, Thin Client and VDI Software
- Standard Delivery Solution
- Desktop Management
- Multi-Tenancy




Resilient Solution

- Elastic & Shared Solution
- Remote Work Solution
- Reutilize existing investment on PCs
- Temporary Work Solution
- 2D and 3D Solutions
- Lightweight Solution



NexaVM Backup & Recovery

 Username

 Password

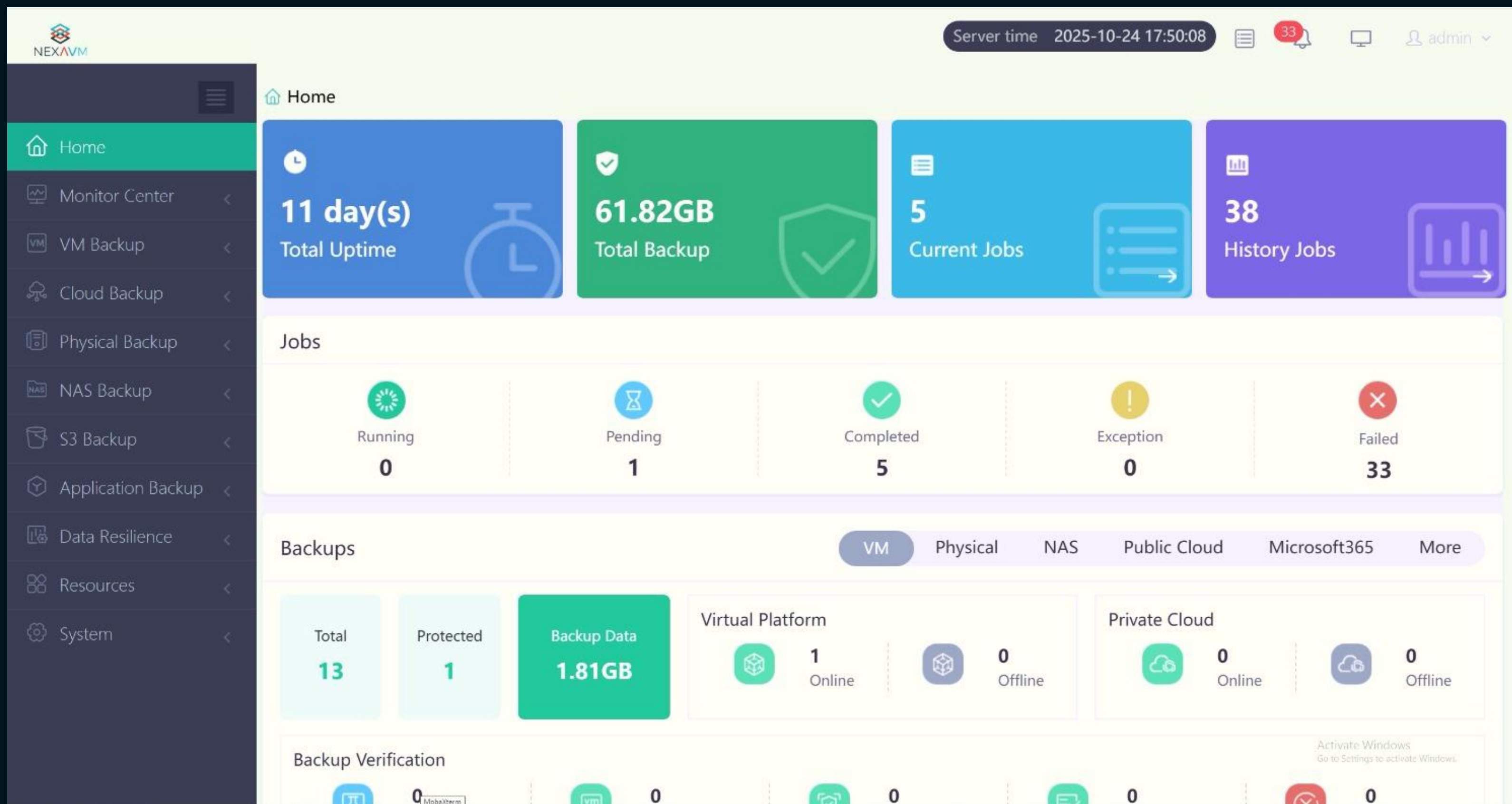


☐ Remember password

[Forgot password?](#)

Login

[Download Backup Plugin](#)



Success Stories

Some Reference Customers



THANK You!